

# VELOCITY AFTERBURNER GRAVEL



## 2024 ABA PROVINCIAL GRAVEL CHAMPIONSHIPS

---

SEPTEMBER 8, 2024  
ALDER FLATS, ALBERTA



## VELOCITY CYCLING CLUB PRESENTS

# After Burner Gravel – the 2024 ABA Provincial Gravel Championships. September 8, 2024

Staging out of Alder Flats, southwest of Edmonton, **the Provincial Championship route is 105 km** with 734 m of elevation gain. There will also be a **recreational route of 56 km** with 405 m of elevation gain.

The majority of both routes run through aspen parkland on oil lease roads belonging to Cenovus Energy and Bonterra Energy with the remainder of the route on Wetaskiwin and Clearwater county roads. The oil lease roads are very quiet – primarily single lane with some narrowing to double track. We are thankful for permission of both counties and Cenovus and Bonterra for the use of these roads.

Riders will be treated to a BBQ meal post-ride with alcoholic beverages provided by the Alder Flats Legion.

---

### CATEGORIES

Open Men **105 km**  
*sub-category 50+ Masters\**

Open Women **105 km**  
*sub-category 50+ Masters\**

Recreational **56 km**

### REGISTRATION / ENTRY FEE

**\$75** for all categories. ABA Race License holders are eligible for a \$20 discount when registering on Zone 4.

[Register online at Zone 4](#)

Registration closes **midnight September 4.**

*\* Velocity CC will recognize top finishers aged 50 and over. This is not an official ABA masters category. ABA medals will NOT be presented to the top age 50+ finishers unless they finish in the top 3 in their open category.*

---

### RACE CONTACTS

Allan Plesniarski  
[dlachego@gmail.com](mailto:dlachego@gmail.com)

Ed Heacock  
[heacock@telusplanet.net](mailto:heacock@telusplanet.net)  
780-860-6469

---

### CHIEF COMMISSAIRE

Shawna Francis

---

### LAND ACKNOWLEDGEMENT

Velocity Cycling Club and the Alberta Bicycling Association recognize that our event is on Treaty 6 territory. The land is a traditional meeting ground, gathering place, and traveling route of the Cree, Saulteaux, Blackfoot, Métis, Dene, and Nakota Sioux. We acknowledge that this is traditional and ancestral land, home to many First Nation, Métis and Inuit.

# VENUE

Alder Flats is approximately 160 km from Edmonton and 265 from Calgary.

When travelling south from Edmonton on Hwy 2 take the Wetaskiwin/Hwy 13 interchange then travel west to Alder Flats. When travelling north on Hwy 22 from Calgary, take Hwy 13 west to Alder Flats.

## RACE HEADQUARTERS/SIGN ON

**Alder Flats Agricultural Society Hall** in Alder Flats. [Get directions on Google Maps](#)

Parking is adjacent the S/F area.

## POST RACE SHOWERS AND BIKE WASH

Post race showers are available a Hot Hods Car Wash located on the south side of Highway 13 just after the finish line. The fee for the showers is included with your registration. The car wash will also be available to wash bikes at an additional charge.

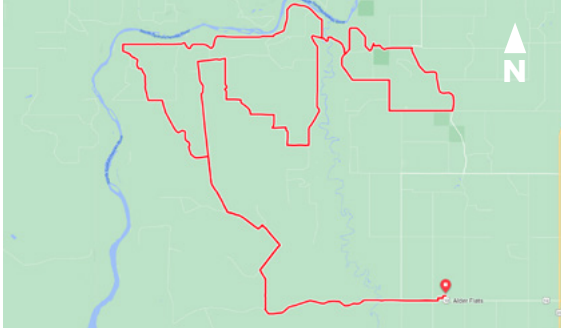


# CAMPING

Free overnight camping will be available on site at the Alder Flats Rec Center Saturday night (September 7) for those who wish to tent or have RVs. No serviced sites are available for RVs but washroom facilities will be available. There is also a private campsite in town with serviced sites just a short distance from the Rec Center.

# COURSE

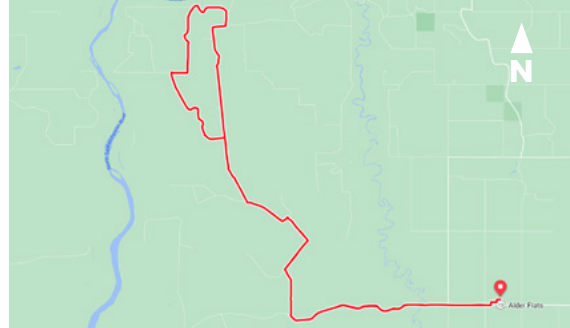
## 105 KM CHAMPIONSHIP ROUTE



[105 km Route on Ride with GPS](#)

[105 km Route on Strava](#)

## 56 KM RECREATIONAL ROUTE



[56 km Route on Ride with GPS](#)

[56 km Route on Strava](#)

---

# FORMAT

A traditional road event – **first across the line.**

Course will be signed. The route includes multiple intersections with multiple opportunities to become lost/disoriented. The routes are available in .FIT and .gpx format. **All riders should have the route downloaded to their respective electronic cycling devices, prior to the start.**

---

# SCHEDULE

## SIGN ON

Sign on opens at **8:15 am** and closes **15 minutes** before the start.

## PROVINCIAL GRAVEL CHAMPIONSHIPS (105KM)

Open Men/Women **105 km** start at **10:30 am**

*\*Riders must hold a valid ABA license to qualify for a provincial medal or jersey.  
A separate podium may be awarded for unlicensed racers who finish in the top 3.*

## RECREATIONAL (56KM)

Men/Women **56 km** start at **10:40 am**

## PODIUMS AND PRIZE PRESENTATION

Podium presentations will take place at the **Alder Flats Agricultural Society Hall** as soon as possible after the results are confirmed by the ABA commissaires. The ABA medal presentation for the first three men and women in the open category will take place as soon as results are confirmed. Additionally the first three male/female 50+ open category riders will also be recognized at that time.

# RACE SUPPORT

Our support vehicle will sweep the course following the race for riders unable to finish due to mechanicals or injuries. If you are injured make yourself known to a race vehicle.

## FEED STATIONS

Feed stations will have water and energy bars. Short course (56 km route) feed is at kilometer 31. Long course (105 km route) feeds are at kilometers 42, 63 and 80.

## MANDATORY GEAR

Our support crew will handle rider emergency situations. Flat tires are not an emergency. Riders should carry tools and spares to deal with mechanical issues along with extra layers in case of changing weather conditions.

---

# RULES & REGULATIONS

## WHO CAN RIDE

All ABA-affiliated club members are eligible to register.

## RACE NUMBERS

Frame plate numbers will be provided for the front of your bike and will be available for pick up at sign on prior to the start – please bring zip ties. If there are over 50 registrants expect chip timing.

## REGULATIONS

This event will be run in accordance with **ABA/CC/UCI** Cycling regulations. Riders are responsible for knowing and understanding these regulations. They can be found online [here](#).

## RULES OF THE ROAD

There is no road closure for this event. Riders are expected to obey all traffic laws. **Centreline rule is in effect on the paved portion of the route** as per ABA road rules and will be enforced.

## ANTI-DOPING

The ABA complies with and fully supports the **UCI anti-doping regulations**, the clauses of the **World Anti-doping Code** and its international Standards to which the UCI anti-doping regulations refer and to the anti-doping regulations of other competent bodies per the regulations of the UCI.

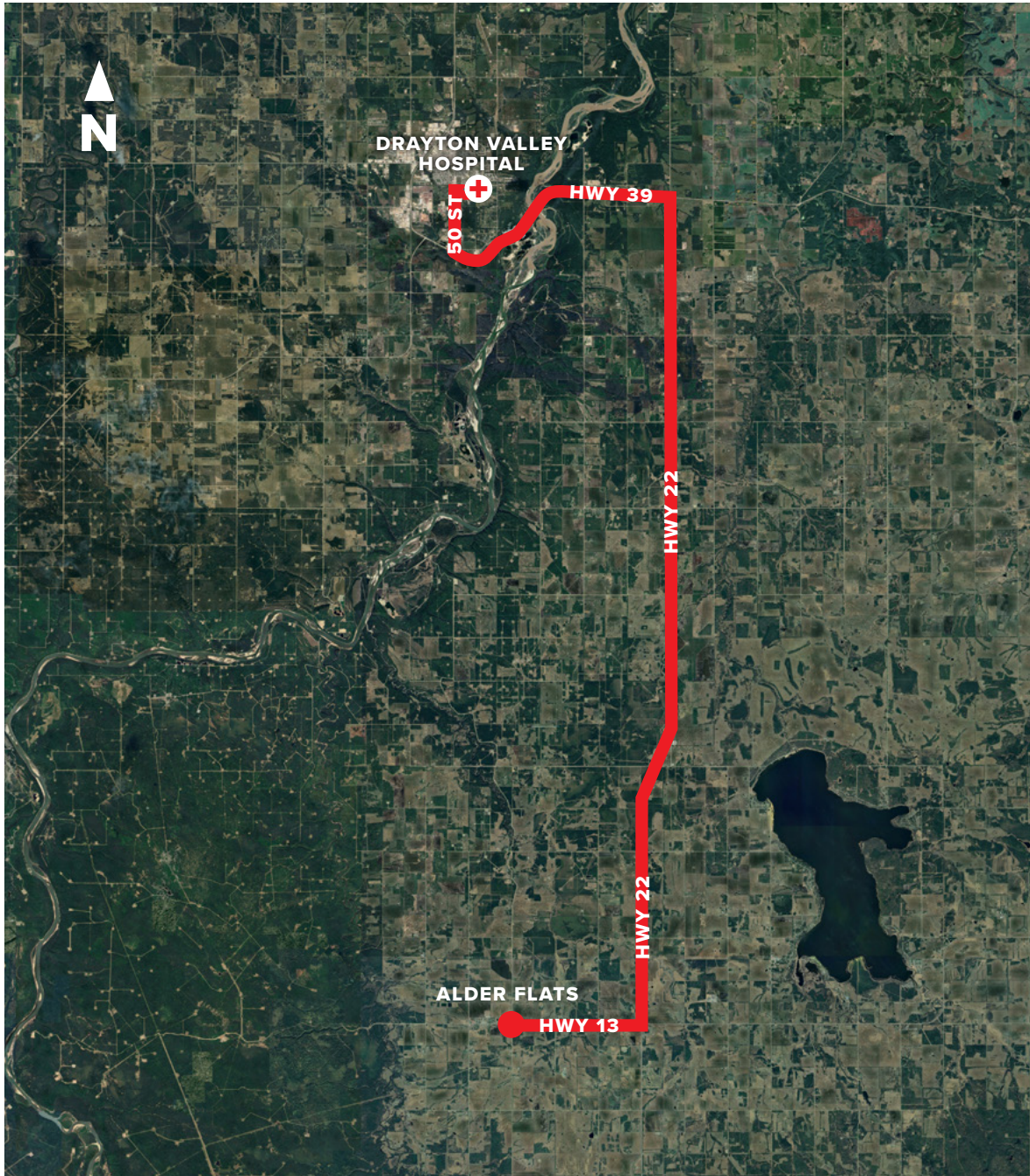
## RIDER CONDUCT

It is a privilege to use Cenovus Energy roads. Unsportsmanlike conduct including but not limited to littering will not be tolerated.

# MEDICAL INFORMATION/ HOSPITAL LOCATION

An Emergency Medical Responder complete with vehicle will be on site. If there is an incident on course please let the nearest course marshal know so first aid personnel can be dispatched.

The nearest hospital is in Drayton Valley, 48 km from Alder Flats. [Get directions on Google maps.](#)



# THANK YOU!

Thank you to the counties and companies for allowing us to use their roads:

**CLEARWATER COUNTY**

**CENOVUS ENERGY**

**WETASKIWIN COUNTY**

**OBSIDIAN ENERGY**

**BONTERRA ENERGY**

**RICOCHET OIL**

